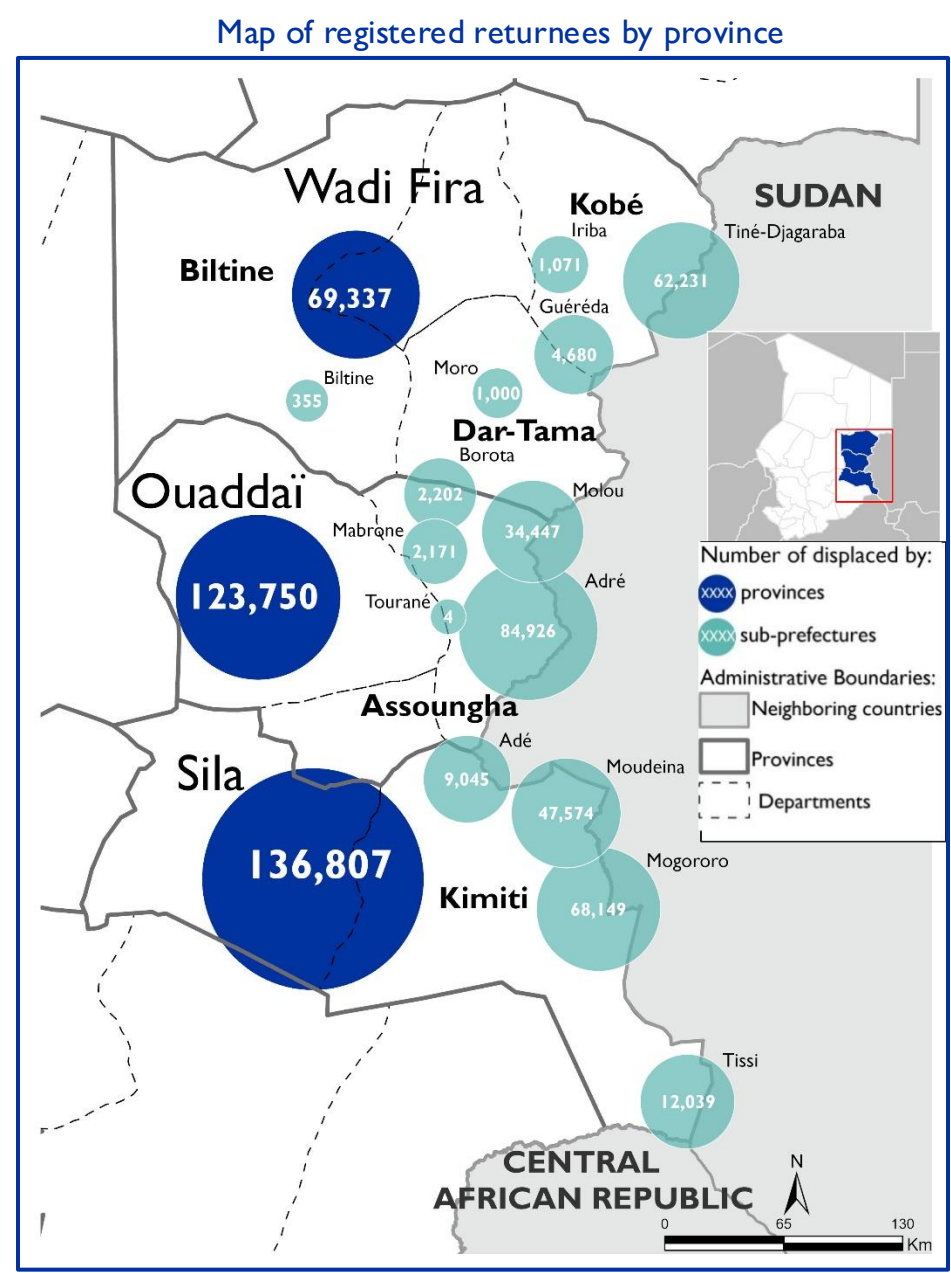


***Disclaimer:** The observed decrease in numbers after September 2024 is attributed to a change in methodology, which now excludes the estimates in certain localities after registrations. Projections between August and September 2024 were made based on the estimates from previous months.



This map is for illustration purposes only. The depiction and use of boundaries, geographic names and related data shown on maps and included in this report are not warranted to be error free nor do they imply judgment on the legal status of any territory, or any endorsement or acceptance of such boundaries by IOM.

HIGHLIGHTS

An estimated 1,207,088 people have crossed into Chad since the onset of the crisis in Sudan, of which 329,894 are Chadian returnees as of 31 August 2025. IOM expects this number to rise to 350,000 by December 2025 due to ongoing conflict and food insecurity in Darfur.

BACKGROUND

Returnees are Chadian nationals who were living in Sudan and have been displaced back to their home country, where they lack the resources to rebuild their lives. Returnees are living either in displacement sites or within host communities. They are in urgent need of food, water, sanitation and hygiene (WASH), shelter, household items (NFI), health, and protection. IOM is the lead agency for the returnee response, in close coordination with the Government of Chad, local authorities, UN agencies, and local and international NGOs.



¹ The data was collected from May 2023 to 31 August 2025. These figures were collected through registrations in the 81 locations assessed (among these localities, 36 correspond to neighbourhoods located in the Tiné sub-prefecture).
² Biometric registrations were done at Tongori in December 2023 and 2024, as well as in February and March 2025, and at the Deguessa site in June and July 2024.
³ Registrations took place in nearly half of the assessed localities (45 localities).
⁴ IOM projections on returnees are evaluated every six months.

SINCE THE BEGINNING OF THE CRISIS, IOM SUPPORTED WITH THE FOLLOWING:



Disclaimer: Assistance is distributed on a household level, where number of individuals reached may be subject to change and refined once a distribution has been completed.

EMERGENCY ASSISTANCE PROVIDED TO DATE

IOM is leading life-saving assistance for Chadian returnees from Sudan via multisectoral interventions.

IOM HAS SUPPORTED:

- 214,820 returnees and host community members in 33 communities in eastern Chad with lifesaving multisectoral as well as resilience assistance since the beginning of the crisis.
- 28,549 individuals through the construction of 5,310 transitional shelters, and IOM is constructing an additional 1,005 shelters in Ouaddaï and Sila.
- 105,636 returnees and host community members assisted with resilience assistance, including improved community infrastructure, livelihoods, and permanent houses to replace transitional shelters.
- 94,861 returnees by creating 10 new boreholes (thermic, solar-powered, and manual), 639 latrines, and distributing 8,489 essential WASH kits.
- 14,241 households (76,604 individuals) to cover their most essential needs through multipurpose cash assistance.
- 20,723 households (110,406 individuals) through non-food items distributions.
- In collaboration with WFP, 105,850 returnees with food distribution across the provinces of Ouaddaï and Sila.

REPORTING PERIOD UPDATES

HUMANITARIAN ASSISTANCE AND COORDINATION

As the lead agency for the humanitarian response for returnees, IOM continues to coordinate with national, international, and government partners (CNARR, local authorities) to deliver vital services to vulnerable returnees in the east of Chad. IOM continues to support and coordinate the delivery of WASH, food, protection, health, shelter, NFI, and education assistance in returnee sites by national and international partners, including UNICEF, UNFPA, WFP, Concern Worldwide, INTERSOS, COOPI, ACTED, Help Tchad, and the Chadian Red Cross.

- IOM has relaunched its mental health and psychosocial support (MHPSS) activities for returnees and host communities in the three provinces of Ouaddaï, Sila, and Wadi Fira. This includes strengthening community structures and social cohesion, providing individual protection and mental health assistance, and monitoring protection through the national NGO Help Chad.
- IOM is preparing to support the interagency response and cholera prevention in Ouaddaï province through hygiene promotion and community awareness-raising.

DISPLACEMENT DATA & KNOWLEDGE SHARING

IOM's Displacement Tracking Matrix (DTM) is a leading tool to monitor and analyse displacement flows. IOM DTM teams, including CNARR agents, locally recruited and trained enumerators, are deployed across Sila and Ouaddaï provinces on an ongoing basis to identify and register vulnerable returnee households, including newly arrived households as well as households in remote locations, not previously identified. IOM's data on displacement and needs feeds knowledge sharing within the humanitarian community to coordinate and target lifesaving assistance to those in need.

- In August, the DTM team conducted a multi-sectoral basic needs assessment in the localities of Ferik Tcheyo and Cheheta (Adré sub-prefecture), as well as in Bouldoung and Midjiguita (Molou sub-prefecture).
- This assessment highlighted that the Midjiguita site hosted a significant number of returnees, estimated around 9,000 individuals, the majority of them arrived in 2024. It should be noted that no information was reported between the registrations completed in 2023 and December 2024. The estimated population has been consolidated in this report.

RESILIENCE AND POST-EMERGENCY

IOM is developing its programme to support long-term resilience and recovery of Chadian returnees and the communities hosting them.

- IOM has completed the distribution of income generating support to 314 returned households and host communities in Awin Rado and Goz Saffrah in Sila, including the distribution of seeds for farmers, small ruminants and poultry for livestock farmers, and goods for small traders, as well as technical training for these beneficiaries. IOM is also installing two grain mills in these two communities.
- IOM has launched a program to monitor and build the capacity of the 378 income-generating activities beneficiaries in Tongori and Toumtouma in Ouaddaï, including profit and inventory management, in order to help them grow their businesses and increase their incomes.
- In Ouaddaï and Sila provinces, IOM also continues to strengthen community infrastructure. In Mabrone (Ouaddaï), IOM has launched the rehabilitation of three manual boreholes serving returnees and local communities.

ARRIVALS IN AUGUST 2025



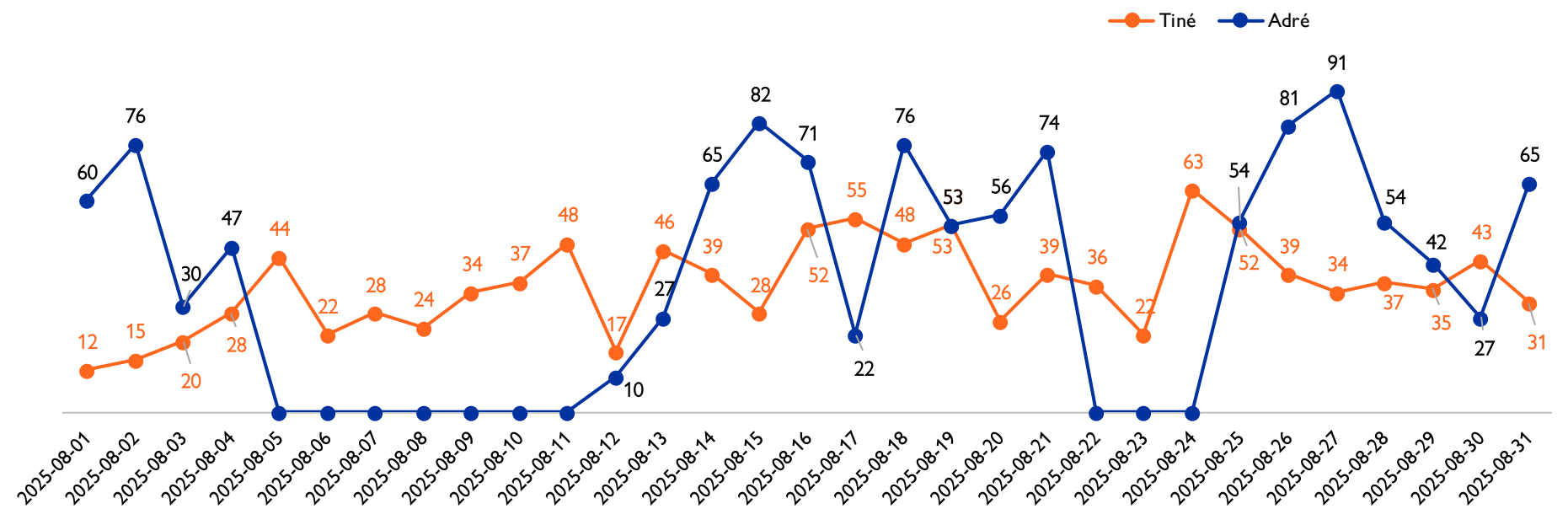
IOM and CNARR monitor daily arrivals of returnees from Sudan passing through the Adré border crossing to collect basic demographic data and provide an estimate of daily displacement flows. The data provides an overview of trends and the volume of flows of returnees, but it is for information only and has some limitations. While CNARR initiates the individuals' initial screening to determine their status, additional responses provided by the returnees are not formally verified. Arrivals through other border crossing points are not monitored, and the temporal coverage is limited to working days (including weekends), but does not include night coverage, hence actual arrival numbers are likely higher. Due to these limitations, the data collected can therefore not be generalized to represent the entire returnee population, as they only present the unique situation of those crossing this border point during this window. Please also note that returnees are not registered at this point but are referred to the IOM registration centre at the lycée Adré, where in-depth evaluation is carried out, jointly with CNARR, before registration.

FLOW OF RETURNEES IDENTIFIED AT THE ADRÉ AND TINÉ BORDER IN AUGUST 2025

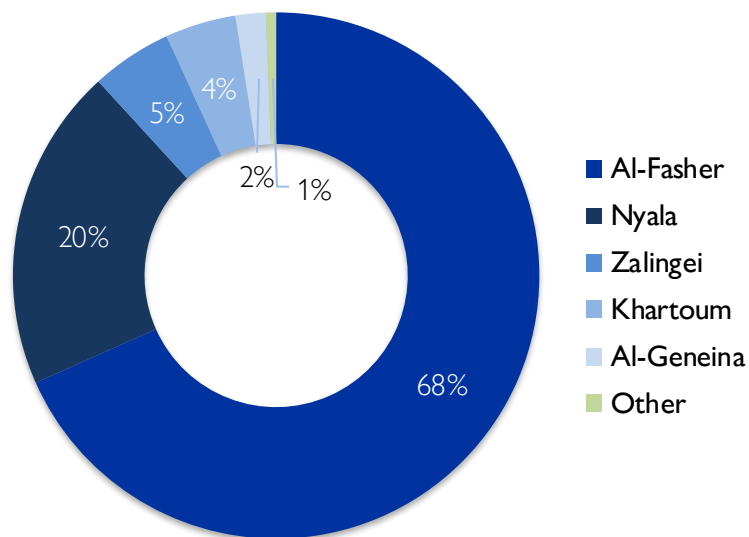
SUMMARY STATISTICS



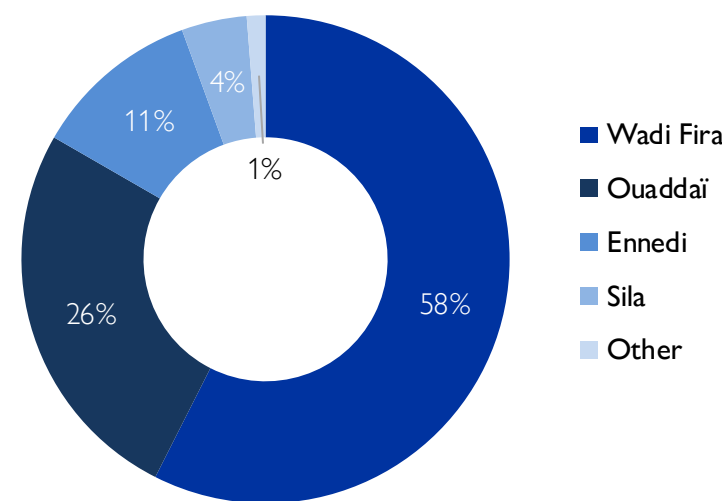
REGISTERED RETURNEES PER DAY AT THE ADRÉ AND TINÉ BORDER



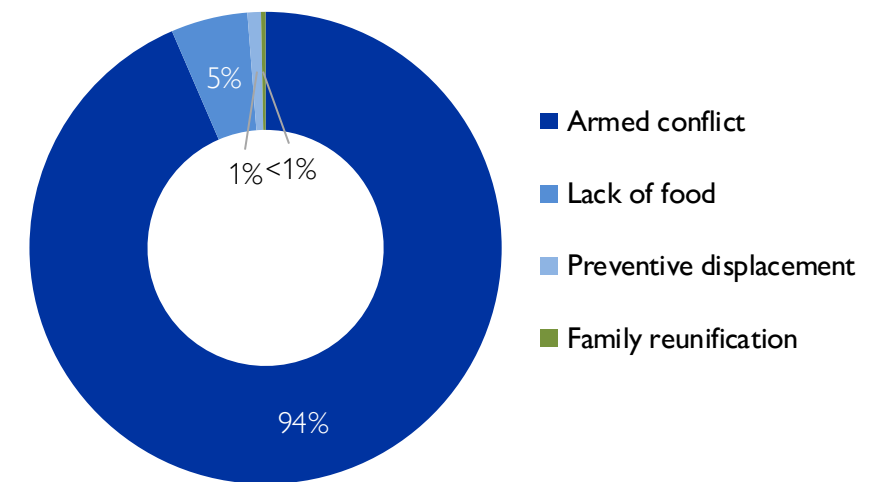
LOCATION OF DEPARTURE (SUDAN)



PROVINCE OF ORIGIN (CHAD)



PRIMARY REASON FOR DEPARTURE



USE & DEFINITION OF BIOMETRIC DATA:

The use of biometrics in registration processes can help collect data to identify vulnerable individuals who may require additional assistance. This may require several ongoing evaluations. In the case of Degoussa and Tongori, these assessments were completed as an initial phase and would require future updates to keep abreast of population movements and their evolution. IOM underlines the importance of using biometrics responsibly, specifically, by ensuring the protection of the beneficiaries' personal data and respecting the rule of law. When processing biometric data, IOM ensures that the data is collected in a lawful and fair manner with the consent of beneficiaries, and that the purpose of the processing is specified and legitimate.

METHODOLOGY & LIMITATIONS:

The data presented on registrations is not exhaustive and does not contend that all returnees are accounted for, nor that the collected data is representative across provinces. The returnee data compiled above presents a summary of all assessments conducted in a spontaneous and sporadic manner based upon knowledge of movements at different points in time and may be outdated. The registration centre at the lycée d'Adré is the only continuous registration site of IOM. As of 12 July 2024, a pre-identification of returnees is conducted at the border, before proper evaluation and registration take place at the centre.

For more information, please contact Michel Kamate, Head of Sub Office - Deputy Emergency Coordinator

Email: MKAMATE@iom.int

For the complete dashboards please check [the DTM WEBSITE](#)



Capacity building for beneficiaries of income-generating activities in Tongori, August 2025 © IOM 2025

